



Pamela R. H. Angelakis, M.A., M.Ed.
Superintendent of Schools

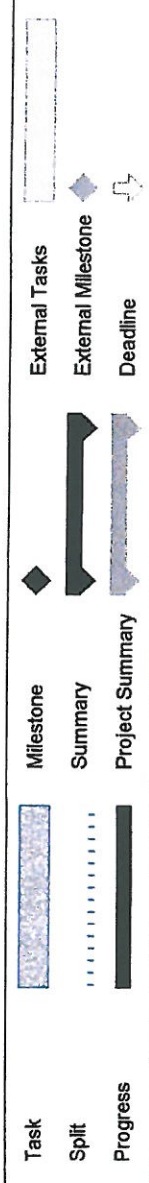
SUPERINTENDENT'S UPDATE

Week ending 10/23/15

- During our most recent PD day, our elementary educators were trained on the new standards based report card that was developed WITHIN Aspen. The alignment, development, and training of this report card is a project that has been 3 years in the making and a HUGE accomplishment for our district. For many years now we have been using a standards based elementary report card that was created in Excel. It was a beast and though aligned with the standards at that time, needed to be updated. The elementary report card we are rolling out this year is now aligned with Math and ELA standards from the Common Core. Please see attachments. The report cards are just samples and "grades" are filled in because these are the documents teachers were practicing on during the PD Day. The family letter is also in DRAFT form.
- The Clarke School Handicap Accessibility Project is running behind schedule. I was informed last Monday. As it stands, the completion date was scheduled for November 20th, however, I've been told the new date is December 11th. After being told a variety of stories regarding the financial implications of this delay I spoke with the architect last Thursday. At this time, the architectural firm will not be looking for additional fees nor is the builder seeking additional monies. Therefore, I will not pursue the penalties for delay in construction per our contract. Please see attached new timeline.

Follow us on Twitter @sps01907

ID	Task Name	Duration	Start	Finish	% Complete	October	November	December
1	Bathroom Work	35 days	Mon 9/21/15	Fri 11/6/15	50%	9/20	9/27 10/4 10/11 10/18 10/25 11/1 11/8 11/15 11/22 11/29 12/6 12/13	
2	Concrete Walls	8 days	Wed 9/16/15	Fri 9/25/15	100%			
3	Backfilling	2 days	Tue 9/29/15	Wed 9/30/15	100%			
4	Concrete Slabs	9 days	Wed 10/7/15	Mon 10/19/15	100%			
5	Steel Structure	7 days	Tue 10/20/15	Wed 10/28/15	80%			
6	Fireproofing	3 days	Thu 10/29/15	Mon 11/2/15	0%			
7	Closing exterior walls and roofing/Storefronts	9 days	Tue 11/3/15	Fri 11/13/15	0%			
8	Masonry	10 days	Mon 11/16/15	Fri 11/27/15	0%			
9	Rough Electrical and Wheel Chair power	5 days	Mon 11/16/15	Fri 11/20/15	0%			
10	Interior finishes	15 days	Mon 11/23/15	Fri 12/11/15	0%			
11	Wheel Chair	20 days	Mon 11/16/15	Fri 12/11/15	0%			
12	Exterior Rails	5 days	Mon 11/9/15	Fri 11/13/15	0%			
13	Paving and site finish work	2 days	Mon 10/26/15	Tue 10/27/15	0%			



Project: Clarke School
Date: Wed 10/21/15

Task
Split
Progress

Milestone
Summary
Project Summary

External Tasks
External Milestone
Deadline